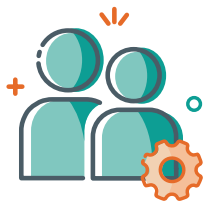




**One Tenant. Endless Management Possibilities.**



## Scale and Transform Microsoft 365 Management



### Right-Size Administration

Tailor and align administration permissions to meet your operational and security needs. With our RBAC architecture, daily tasks like resetting a user's password, setting up a new resource mailbox, or clearing out inactive SharePoint sites, will only be accessible to admins who require it. You choose how admin permissions are structured - by application, location, department, tiered IT support - whatever makes sense for your organization.



### Maximize Adoption & ROI

Ensure your organization gets the most out of Microsoft 365 with consolidated activity dashboards. Understand what apps users most depend on, whether they are using mobile or desktop devices more, or which SharePoint sites have the highest impact on the organization. Dive deeper by application and discover which teams leverage features like Teams calls, SMS, or chats and if the quality of the connection might be the reason why others are not using them. You've invested, safeguard its use.

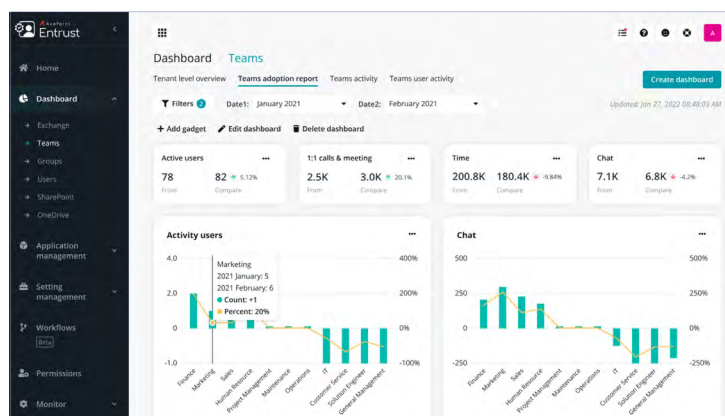
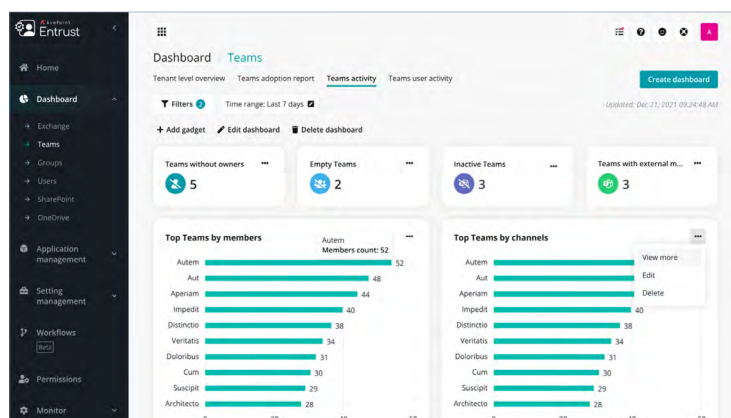
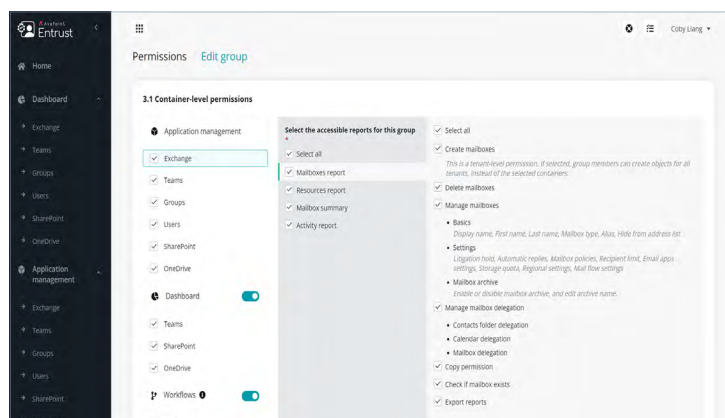


### Centralize & Monitor Activity

Streamline how you gather and access admin logs across Microsoft 365 by centralizing all audit and job information in one central location. Quickly identify and get to the root of why a job was unsuccessful or review in bulk to see if any trends need remediation. Break down visibility into audits and jobs one step further by only giving access to admins that need it.

## ALIGN MICROSOFT 365 MANAGEMENT WITH YOUR OPERATION

Microsoft 365 has brought great collaboration opportunities to organizations. However, behind the scenes, it has created security and risk concerns. Whether you organize management by application, department, or location, the bottom line is anyone with admin permissions will gain access to your entire tenant. AvePoint Entrust not only breaks down administration permissions with role-based access controls (RBAC) architecture to focus current admins on their assignments but opens the possibility of who can complete daily tasks creating much-needed efficiency and scale.



The screenshot shows the 'Application management' page in the AvePoint Entrust interface. It displays a table of applications with the following columns: Site name, URL, Container, Teams, Primary admin, Template, Created time, and Created by. The table lists various applications, including 'APAC\_External\_Team', 'APAC\_Internal\_Team', 'EU\_DACH\_Team', 'EU\_EnterpriseAutomation\_Team', 'EU\_FR\_Team', 'EU\_NL\_Team', 'EU\_UK\_Team', 'NA\_Marketing\_Team', 'NA\_Production\_Team', 'NA\_Project\_Team', and 'NA\_Sales\_Team'.

## CONTROL

- **Administration permissions** – For Exchange, Teams, SharePoint Online, OneDrive, Azure Active Directory, and Groups, break down administration permissions and give each admin access to only what they need.
- **Manual trigger and dynamic workflows** – Allow admins to create and define workflows with a no-code approach and delegate the creation or execution to other teams to address both the needs of IT management and operational flexibility.
- **Audit log** – Quickly generate and export admin user audit reports for Exchange, Teams, SharePoint Online, OneDrive, Azure Active Directory, and Groups.
- **Monitor jobs** – Understand whether a job was successful or unsuccessful. For those unsuccessful, dig into the root cause and remediate.

## VISIBILITY

- **Centralized dashboards** – Thru application dashboards, surface critical information in one pane, and act immediately.
- **Compliance risk report** – A single view that brings together compliance and security information across Exchange, user access, administration, collaboration, and top risks to mitigate common compliance operational risks.
- **M365 Adoption tracking** – Understand how users are leveraging M365 with user activity, M365 apps, and user activation charts.
- **M365 App reports** – Review key activity by application with container-level report charts for Teams, SharePoint Online, Exchange, and OneDrive.
- **Storage quota** – Know and monitor Group mailboxes and sites storage quotas in your organization over a selected time range. In addition, monitor and track your top SharePoint sites and user OneDrives that use the most storage.

For a comprehensive list of new features in this release, please view our [release notes](#).

## How to Buy AvePoint Products

201.793.1111 | [Sales@AvePoint.com](mailto:Sales@AvePoint.com) | Start your free trial today: [www.avepointonlineservices.com](http://www.avepointonlineservices.com)  
AvePoint Global Headquarters | 525 Washington Blvd, Suite 1400 | Jersey City, NJ 07310